

# BADEN

HEIDELBERG

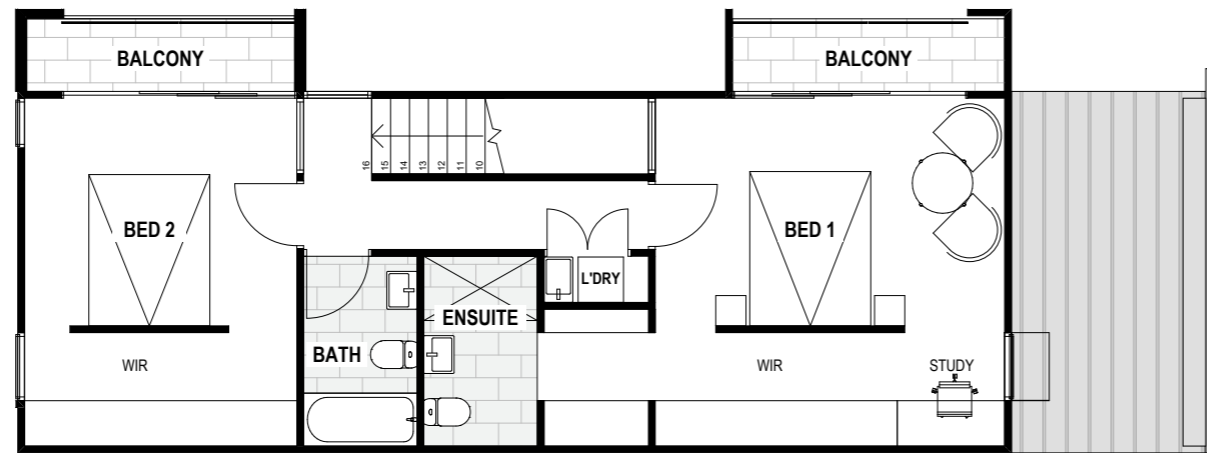
**Masterplan and Floorplans**



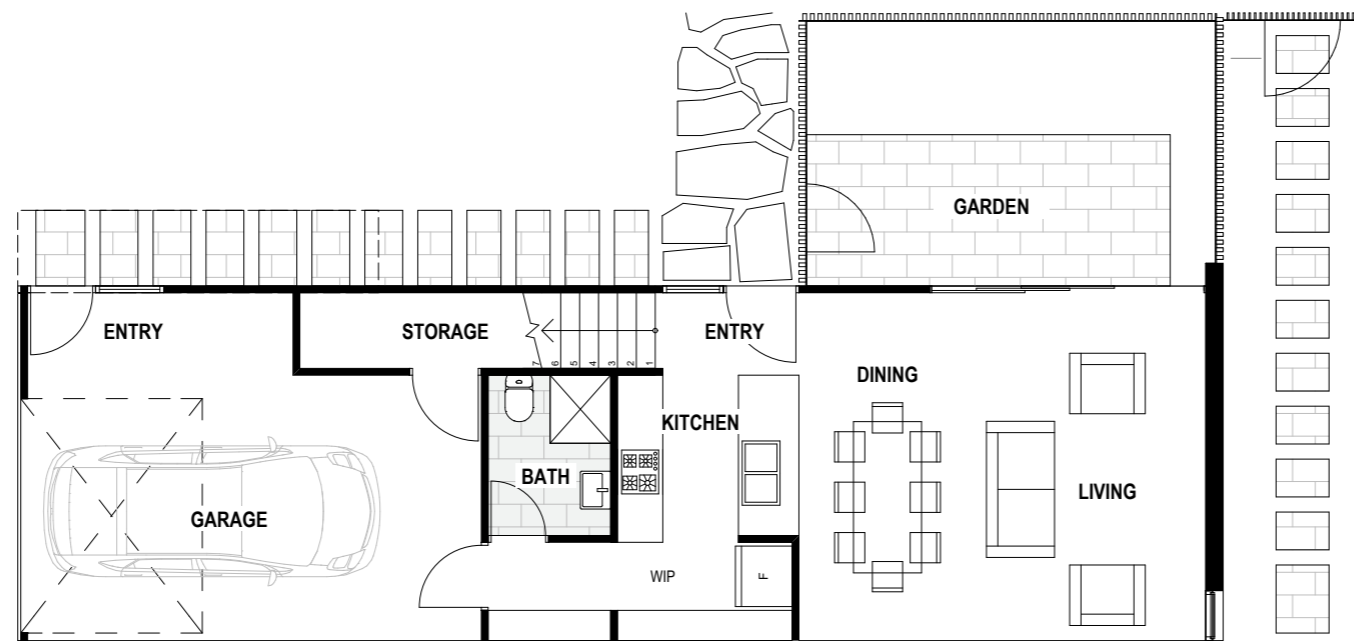
# BADEN

HEIDELBERG

## FIRST FLOOR



## GROUND FLOOR



### Type A1 TOWNHOUSE 1

Bedrooms	2
Bathrooms	3
Car Spaces	1

GROUND FLOOR: 49.80 m<sup>2</sup>

FIRST FLOOR: 63.00 m<sup>2</sup>

BALCONY: 8.70 m<sup>2</sup>

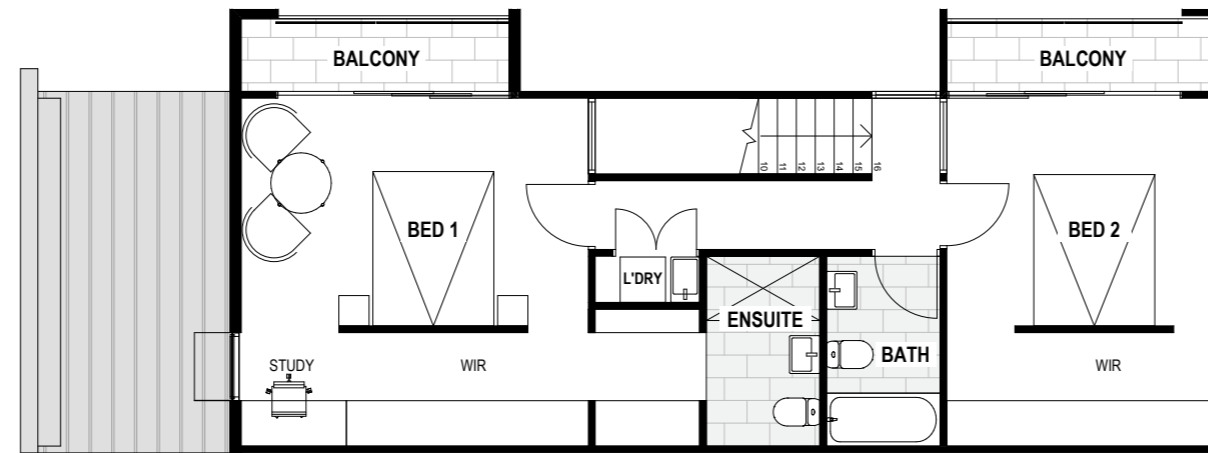
**TOTAL LIVING: 121.50 m<sup>2</sup>**

GARAGE: 26.60 m<sup>2</sup>

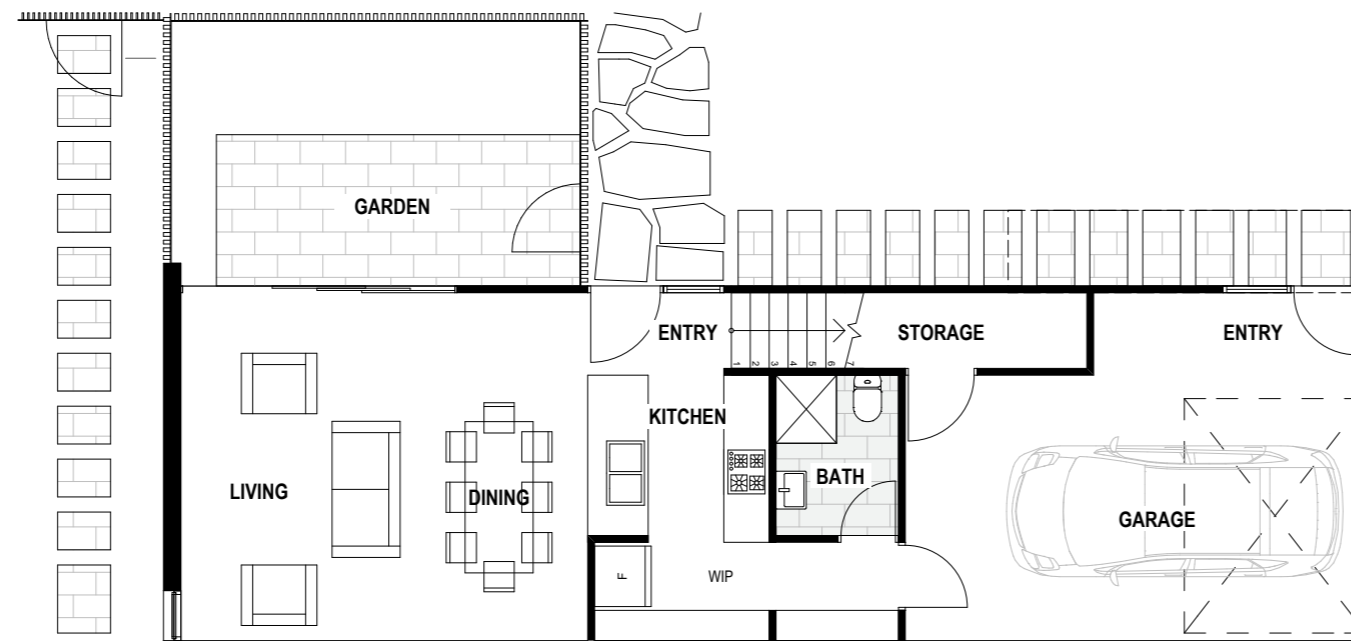
# BADEN

HEIDELBERG

## FIRST FLOOR



## GROUND FLOOR



### Type A2

#### TOWNHOUSE 7

Bedrooms	2
Bathrooms	3
Car Spaces	1

GROUND FLOOR: 49.80 m<sup>2</sup>

FIRST FLOOR: 63.00 m<sup>2</sup>

BALCONY: 8.70 m<sup>2</sup>

**TOTAL LIVING: 121.50 m<sup>2</sup>**

GARAGE: 26.60 m<sup>2</sup>

DISCLAIMER: Photography, illustrations, maps and diagrams are intended to be a visual aid only. The enclosed material is subject to change without notice. NOTE: ALL MEASUREMENTS ARE APPROXIMATE ONLY. Landscaping, furniture, fridge (F) and washing machine (WM) are not included. While every effort is made to provide accurate and complete information, Three Pillars Heidelberg Pty Ltd and any of its related companies, agents or representatives do not accept any responsibility or liability for any error, omission or other inaccuracy in the project related documents. All interested parties should make their own enquiries on all matters referred to in the document.

SCALE 1:100 @ A3

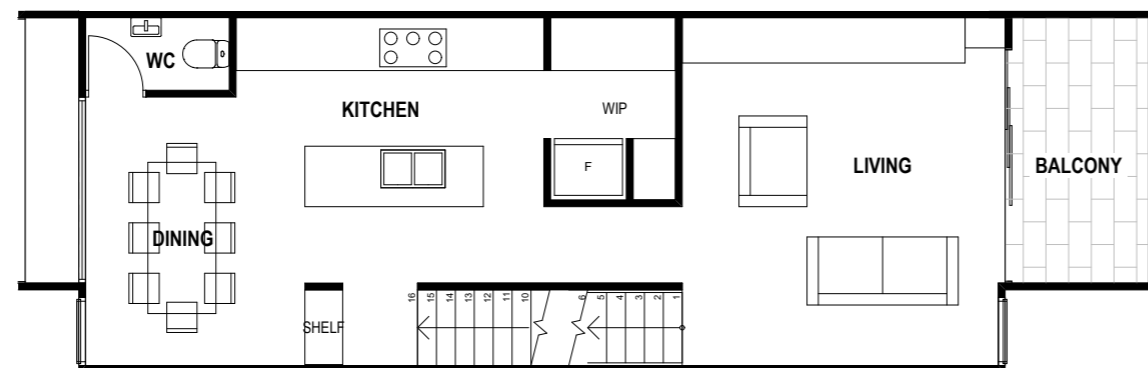
# BADEN

HEIDELBERG

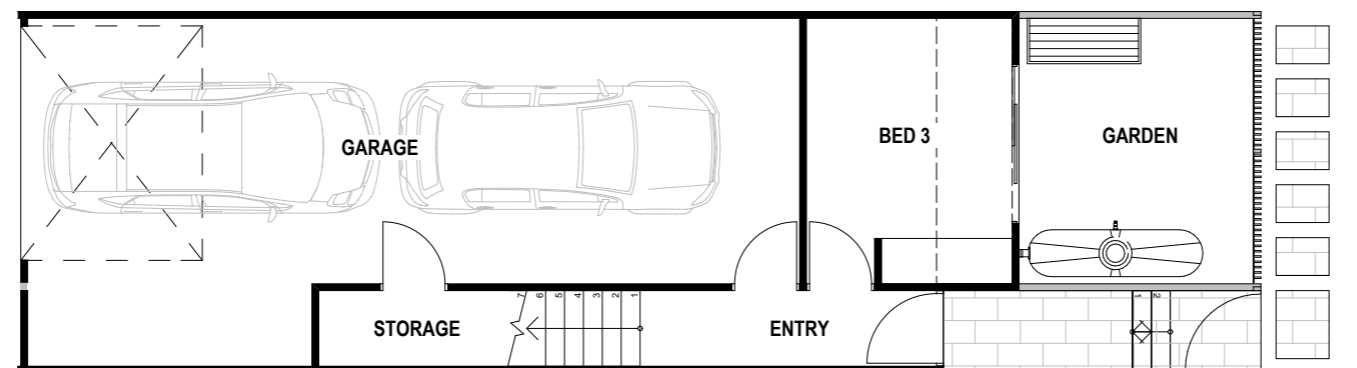
## SECOND FLOOR



## FIRST FLOOR



## GROUND FLOOR



### Type B1

#### TOWNHOUSES 2-5

Bedrooms	3
Bathrooms	2
Car Spaces	2

GROUND FLOOR: 20.30 m<sup>2</sup>

FIRST FLOOR: 61.00 m<sup>2</sup>

SECOND FLOOR: 57.40 m<sup>2</sup>

BALCONY: 8.12 m<sup>2</sup>

**TOTAL LIVING: 146.82 m<sup>2</sup>**

GARAGE: 42.40 m<sup>2</sup>

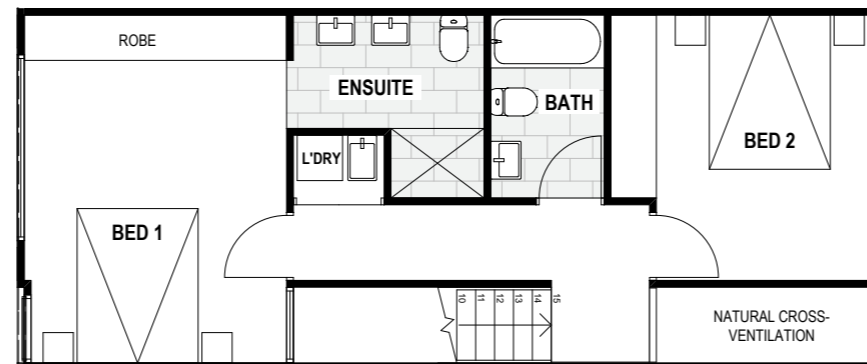
SCALE 1:100 @ A3

DISCLAIMER: Photography, illustrations, maps and diagrams are intended to be a visual aid only. The enclosed material is subject to change without notice. NOTE: ALL MEASUREMENTS ARE APPROXIMATE ONLY. Landscaping, furniture, fridge (F) and washing machine (WM) are not included. While every effort is made to provide accurate and complete information, Three Pillars Heidelberg Pty Ltd and any of its related companies, agents or representatives do not accept any responsibility or liability for any error, omission or other inaccuracy in the project related documents. All interested parties should make their own enquiries on all matters referred to in the document.

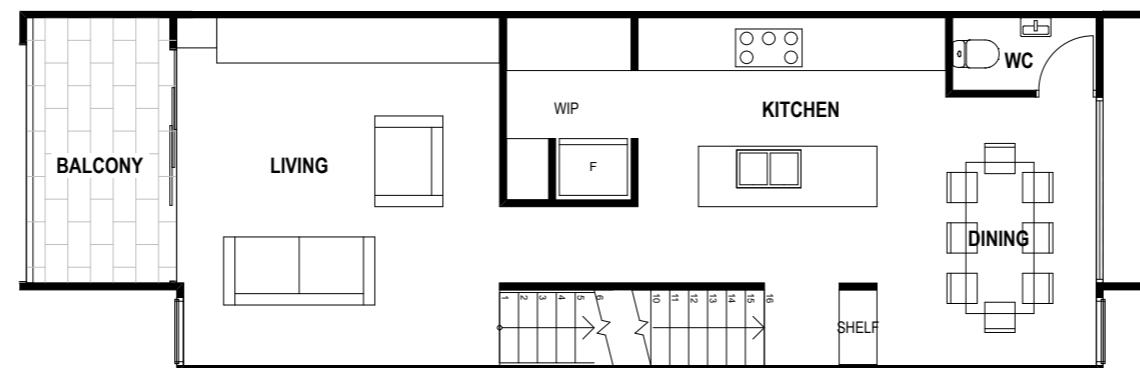
# BADEN

HEIDELBERG

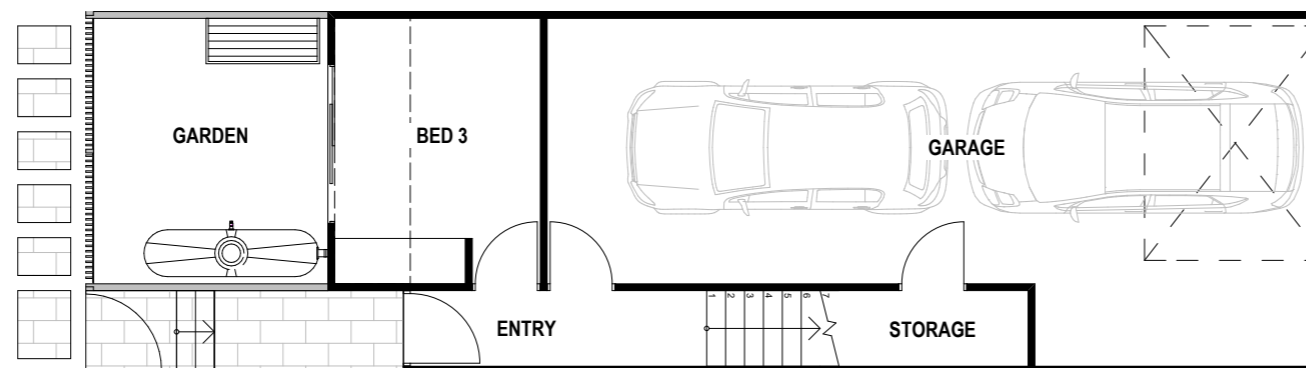
## SECOND FLOOR



## FIRST FLOOR



## GROUND FLOOR



### Type B2

TOWNHOUSES 8-11

Bedrooms	3
Bathrooms	2
Car Spaces	2

GROUND FLOOR: 20.30 m<sup>2</sup>

FIRST FLOOR: 61.00 m<sup>2</sup>

SECOND FLOOR: 57.40 m<sup>2</sup>

BALCONY: 8.12 m<sup>2</sup>

**TOTAL LIVING: 146.82 m<sup>2</sup>**

GARAGE: 42.40 m<sup>2</sup>

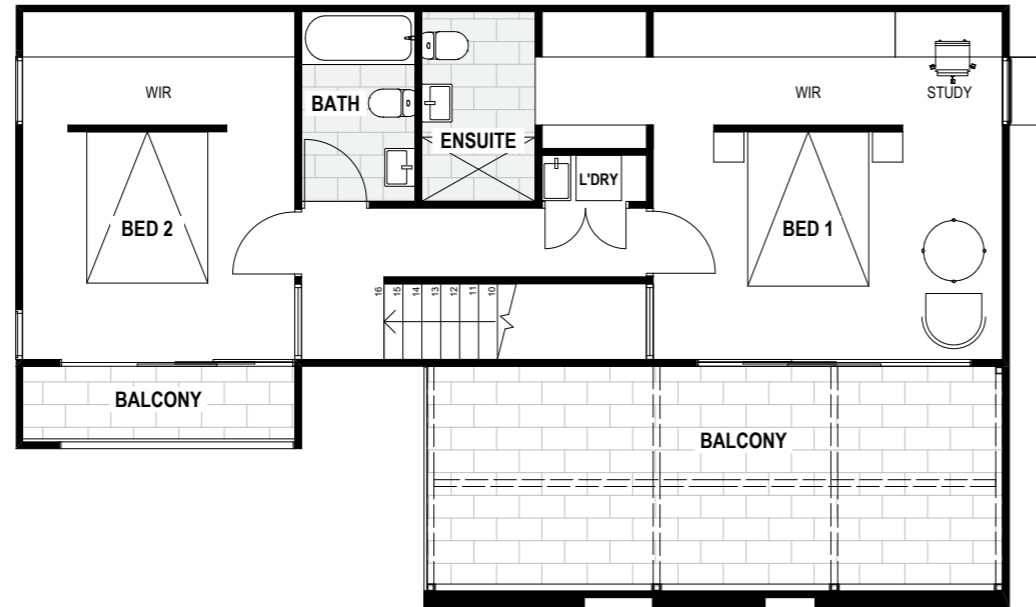
SCALE 1:100 @ A3

DISCLAIMER: Photography, illustrations, maps and diagrams are intended to be a visual aid only. The enclosed material is subject to change without notice. NOTE: ALL MEASUREMENTS ARE APPROXIMATE ONLY. Landscaping, furniture, fridge (F) and washing machine (WM) are not included. While every effort is made to provide accurate and complete information, Three Pillars Heidelberg Pty Ltd and any of its related companies, agents or representatives do not accept any responsibility or liability for any error, omission or other inaccuracy in the project related documents. All interested parties should make their own enquiries on all matters referred to in the document.

# BADEN

HEIDELBERG

## FIRST FLOOR



## GROUND FLOOR



### Type C1 TOWNHOUSE 6

Bedrooms	3
Bathrooms	3
Car Spaces	2

GROUND FLOOR: 57.60 m<sup>2</sup>

FIRST FLOOR: 62.80 m<sup>2</sup>

BALCONY: 26.60 m<sup>2</sup>

**TOTAL LIVING: 147.00 m<sup>2</sup>**

GARAGE: 26.15 m<sup>2</sup>

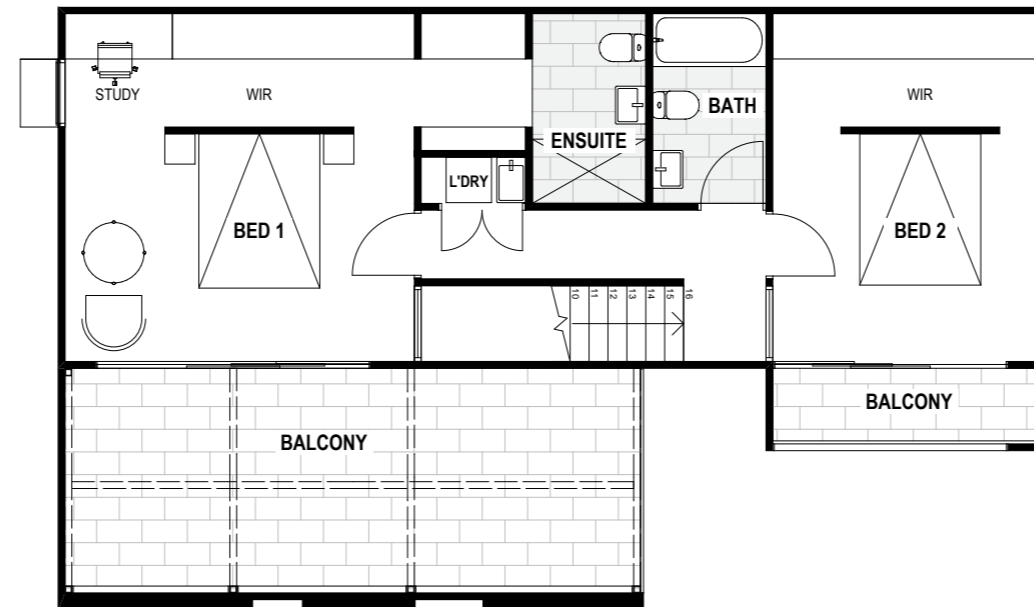
SCALE 1:100 @ A3

DISCLAIMER: Photography, illustrations, maps and diagrams are intended to be a visual aid only. The enclosed material is subject to change without notice. NOTE: ALL MEASUREMENTS ARE APPROXIMATE ONLY. Landscaping, furniture, fridge (F) and washing machine (WM) are not included. While every effort is made to provide accurate and complete information, Three Pillars Heidelberg Pty Ltd and any of its related companies, agents or representatives do not accept any responsibility or liability for any error, omission or other inaccuracy in the project related documents. All interested parties should make their own enquiries on all matters referred to in the document.

# BADEN

HEIDELBERG

## FIRST FLOOR



## GROUND FLOOR



### Type C2

#### TOWNHOUSE 12

Bedrooms 3

Bathrooms 3

Car Spaces 2

GROUND FLOOR: 57.60 m<sup>2</sup>

FIRST FLOOR: 62.80 m<sup>2</sup>

BALCONY: 26.60 m<sup>2</sup>

**TOTAL LIVING: 147.00 m<sup>2</sup>**

GARAGE: 26.15 m<sup>2</sup>

SCALE 1:100 @ A3

DISCLAIMER: Photography, illustrations, maps and diagrams are intended to be a visual aid only. The enclosed material is subject to change without notice. NOTE: ALL MEASUREMENTS ARE APPROXIMATE ONLY. Landscaping, furniture, fridge (F) and washing machine (WM) are not included. While every effort is made to provide accurate and complete information, Three Pillars Heidelberg Pty Ltd and any of its related companies, agents or representatives do not accept any responsibility or liability for any error, omission or other inaccuracy in the project related documents. All interested parties should make their own enquiries on all matters referred to in the document.



**BADEN**

HEIDELBERG

**Brown Street, Heidelberg, VIC 3084**

**BADEN.COM.AU**